

The Aviary @ 360on62 Farm Cottages

Functions and Events Venue

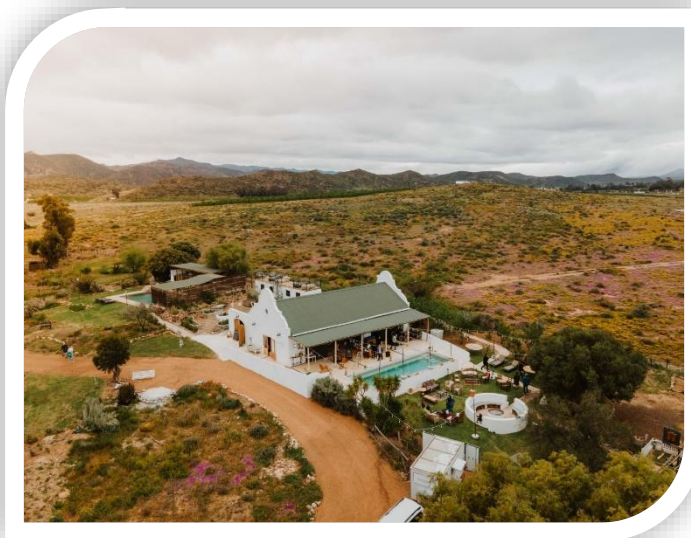
About 360on62 Farm Cottages and the Aviary

Welcome to 360on62 Farm Cottages, nestled just 8km or a brief 7-8 minute drive from the enchanting town of Montagu in the heart of the Western Cape. Our idyllic haven comprises 10 distinct guest units, accommodating a maximum of 24 guests on-site. Perfectly tailored for those seeking an intimate and exclusive ambiance, our farm is a haven for groups desiring the entirety of our scenic landscape for two or more days.

Embracing the charm of communal gatherings, our self-service guest communal pizza bars, adorned with barbecue (braai) facilities, and our two inviting swimming pools, provide the perfect backdrop. Yet, the serenity of personal retreat awaits guests within the confines of their unique units, each boasting wood-fired hot tubs, relaxing patios, and quaint grassy areas. No two units are alike, each possessing distinctive features such as an outdoor bath, an outdoor shower, or both.

Elevating celebrations to new heights, The Aviary, our exclusive function venue, beckons those with grander plans. With a capacity for up to 100 guests, this enchanting space offers a fully-equipped bar, impeccable toilet facilities, a well-appointed kitchen area, and a cold room for the meticulous storage of food and beverages. Mesmerizing mountain views grace both the accommodation units and the venue, creating a picturesque setting for your festivities.

For those dreaming of an outdoor wedding, our scenic haven opens its arms, with two recommended areas: one by our tranquil dam and the other nestled deeper into the farm surrounded by Karoo veld. We eagerly anticipate the privilege of hosting your event, creating cherished memories in the embrace of nature's beauty.





Terms and Conditions: Jan 2025 - Dec 2026

We are delighted that you are considering 360on62 for your special event. Below you'll find our terms and conditions, designed to ensure that everything runs smoothly and that your event is as memorable as possible.

Venue Hire

Our venue, The Aviary, can comfortably accommodate up to 100 guests. Please note that due to licensing restrictions, we cannot exceed a total of 100 guests.

Included in the Standard Venue Hire Rate:

- **Use of The Aviary:** Venue hire includes use of The Aviary from the day of the event, with a midnight cut-off time. Extensions beyond midnight are available at an additional cost but must be agreed upon in advance
- **Wood:** Approximately 200 pieces of wood for the venue fire-pit.
- **Full Farm Access:** Excluding private residences and storage areas, as agreed prior to the event. This includes The Aviary (hall, kitchen, cold room, toilets, and bar), pools, dam, communal bars, pizza ovens, braais, container deck, dam viewing deck, walking / running trails etc.
- **Use of Cold Room:** The venue kitchen has a cold room for storing catering ingredients, wedding cake, flowers etc.
- **Furniture & Equipment:** Includes tables, chairs, crockery, cutlery, vases, candelabras, fridges, freezers, kitchen appliances, and other available items. Please note that if you require additional or alternative items not already available, these must be supplied by you.
- **Table clothes:** As per the options available.
- **Bar Drinking Glasses:** Drinking glasses at the bar will be supplied as part of the bar service.
- **Table Drinking Glasses:** One wine glass, one sparkling wine glass and one beer/cooldrink will be supplied per guest.
- **Fairy Lights:** On the patio of The Aviary.
- **Lawn Games:** A selection of lawn games is available for your enjoyment.
- **Back-Up Power:** We provide a solar and/or generator backup power source. While we strive to ensure uninterrupted power, we cannot be held responsible for any failures of backup sources or Eskom supply.
- **Venue Manager:** The venue manager is available to assist with guided viewings, answer questions, facilitate bookings, finalize contracts, and will oversee the event from time of guest arrival (8 hours of time of the manager are included in the standard, additional hours required for oversight will be at an additional cost). Please note that the venue manager does not act as an event or wedding coordinator. Viewings are by appointment only.
- **Bar Service:** Includes one barman per 50 guests.

Not Included in the Standard Venue Hire Rate: (for items available at additional cost, please refer to the 'Extras' section of this document for fees)

- **Accommodation:** this is charged separately/ Please refer to accommodation section and fees below.
- **Event Planning:** Wedding or event planners are not provided. A **wedding planning service** is offered to ensure the function is seamless on the day. Please enquire about packages available.



- **Marriage Officer:** Not included.
- **Waitstaff and Cleaning Staff:** Can be arranged at an additional fee.
- **Set-Up & Break-Down:** All setup and breakdown of items are the responsibility of the hiring party. Assistance can be arranged for an additional fee and a break-down fee will be charged if break-down is not arranged by the party in terms with this document.
- **Catering:** We have an in-house trained chef. Catering is charged separately – further detail below.
- **Cake:** Not included.
- **Bar Beverages:** See further detail below.
- **Floral Arrangements:** Not included.
- **Photography & Videography:** Not included.
- **Music & Equipment:** Not included.
- **Gas Heaters & Outdoor Lighting:** Available at an extra cost.
- **Speakers & Microphones:** Available for hire at an additional cost.
- **Other Items & Services:** If not explicitly mentioned, they are not included and must be outsourced.

For any services or items that we do offer at an additional cost, advance notice and agreement are required. Our involvement is minimal, focusing on providing accommodation, bar services, and high-level facilitation. All organizing, planning, setup, and breakdown must be managed by your party unless agreed otherwise.

Catering

We pride ourselves on offering a personalized catering experience tailored to your unique tastes. Our in-house chef is professionally qualified and has extensive experience working with local suppliers and our venue's kitchen. We do require that our in-house chef is utilized because of her familiarity with our facilities and thus a far decreased risk of anything going wrong.

We do however understand that your event is deeply personal, and that you may wish to explore other options which must be agreed with us in advance (by exception), but further terms and conditions and costs will then apply.

If we agree to allow the use of an external caterer, please note that:

- only those from our approved supplier list are permitted unless agreed upon otherwise. This ensures that the caterers are fully acquainted with our venue, its facilities, and our requirements. If they are not on our approved list, we will then require that they commit to a detailed site visit in advance (at least 1 week) to familiarize themselves with what is provided and what is not.
- a kitchen hire fee will be payable to cover kitchen costs incurred.
- any external caterer will be required to ensure that they supply all necessary cooking equipment required for your menu that are not supplied by default in our kitchen.
- it will be your and your caterer's responsibility to verify that our venue's electrical system can accommodate the type of equipment needed (e.g., multiple electric deep fryers in conjunction with ovens and the walk-in fridge combined with other equipment being used for the event may cause a power overload).

Bar Service and Alcohol

360on62 is fully licensed for on-premises alcohol consumption and will provide all your bar service needs for your event.

- Bar service is available from 15:00 until 00:00. Should you require bar service before 15:00, an additional hourly fee will apply (unless the event end time is within 9 hours of the start time, as detailed under 'Extras' below).
- Our bar services are managed exclusively by 360on62; we do not allow clients or third parties to manage or operate the bar.



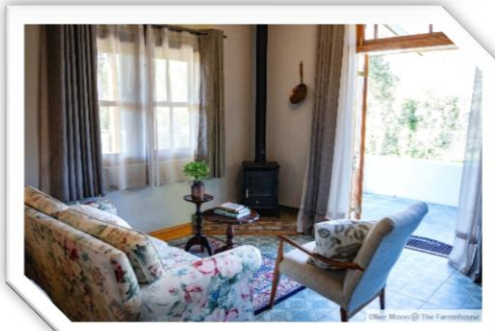
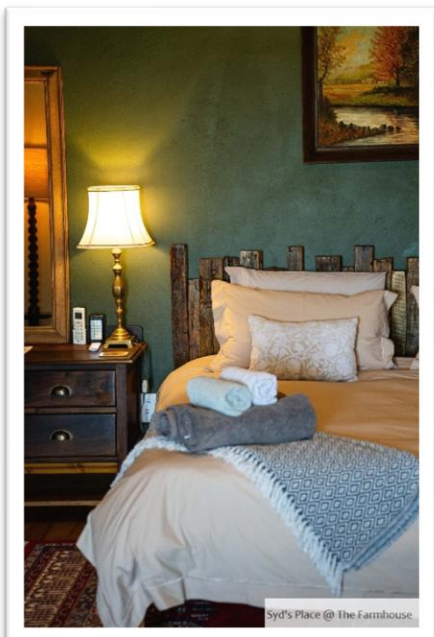
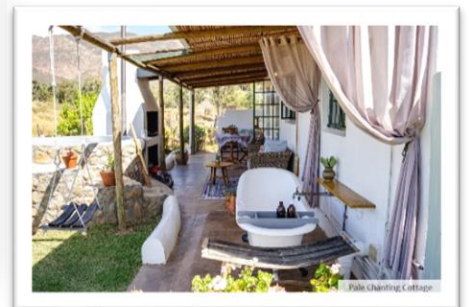
- Only pre-approved alcohol (at least 14 days before the event) for welcome and/or table drinks may be brought onto the premises. A full list of alcohol must be provided and agreed upon.
- We typically allow 2 bottles of wine and 2 bottles of sparkling wine per 10 guests.
- If pre-drinks are not supplied by us, agreement must be reached in advance, and a corkage fee will apply to all Cap Classique, sparkling wines, and wines as detailed under 'Extras' below.
- Any beers / ciders / gin bar / punches etc required for pre-drinks are to be supplied by 360on62's bar- we will provide the wedding party with a discounted price to standard bar prices for this purpose.

For any special bar and beverage requests, please contact the 360on62 Events Manager to confirm if we can accommodate your needs.

Bar Services Include:

- **Cash Bar:** All drinks are settled on a cash basis by guests; or
- **Open Bar:** The full amount is charged to the main account, with an upfront payment of R100 per head due one month before the event. The balance is settled or refunded one week after the event. Certain drinks can be excluded and paid for in cash by guests; or
- **Limited Bar:** A pre-set amount is charged to the main account, with payment required one month prior to the event. As with the open bar, certain drinks can be excluded and paid for in cash by guests.

Accommodation





360on62 offers exclusive award-winning accommodation for up to 24 guests across our 10 unique guest units. All units have private wood fired hot tubs, braai areas, comfortable beds, quality linen, well equipped kitchenettes and beautiful views amongst other features.

- **Booking Requirements:** All accommodation units must be booked for a minimum of two nights for events. Longer minimum stays may apply during holiday periods and long weekends (e.g. 4-night minimum over Christmas/New Year, 3-night minimum over Easter).
- **Booking Process:** We require bulk accommodation bookings to be made by the organizing party (client), with a 50% deposit due to secure the booking. The balance is payable at least one month before the event. Clients are responsible for recouping costs from individual guests if applicable.
- **Please refer to our website** (www.360on62.co.za) to view our accommodation options.
- **There is abundant accommodation within 10km of the venue (10 minutes' drive)** for overflow guests. We will be happy to assist with recommendations in this regard.

Fees – Venue and Accommodation:

Venue hire fees:

	2025*	2026*
0-50 people	R33,000	R34,650
51-100 people	R37,000	R38,850

Accommodation fees:

Total Price for all units for 2 nights	2025*	2026*
	R45,740	R48,760

* a 15% discount will be applied for events held in June or July
 We have a total of 10 units (8 are one-bedroom units, 2 are two-bedroom units)
 A minimum stay of two nights per unit is required.

Indicative Costs (Excluding Catering, Extras and Breakages/Shortages/Damages/Deposit)

0-50 people for venue / function and max 24 people for accommodation:

	2025	2026
Accommodation (2 nights):	R45,740	R48,760
Venue:	R33,000	R34,650
Total:	R78,740	R83,410

51-100 people for venue / function and max 24 people for accommodation:

	2025	2026
Accommodation (2 nights):	R45,740	R48,760
Venue:	R37,000	R38,850
Total:	R82,740	R87,610



General Fees and Payments

- **VAT:** All fees include VAT unless stated otherwise.
- **A refundable breakage deposit** of R4,000 is required
- **Deposits:** A 50% deposit for venue hire and accommodation is required to secure your booking. Deposits must be paid within 7 days of confirming a provisional booking. Failure to pay within this period may result in the release of your provisional booking without notice.
- **Balance Payment:** The remaining balance, including any additional agreed-upon extras, is due 30 days before the event.
- **Payment Plans:** We are happy to discuss payment plans of 2-3 installments, provided the event is more than 6 months away. The balance will remain due 30 days prior to the event.

Cancellation Policy – Venue & Related Costs:

- 100% refund of deposit if canceled 8+ months prior to event
- 50% refund of deposit if canceled 4 - 8 months prior to event
- 0% refund of deposit if canceled 2 - 4 months prior to event
- 100% of the total quoted amount if canceled within 2 months of the event

Cancellation Policy – Accommodation:

(Note: The standard accommodation cancellation policy does not apply to bookings for events.)

- 100% refund of deposit if canceled 4+ months prior to event
- 50% refund of deposit if canceled 2 - 4 months prior to event
- 0% refund of deposit if canceled 1 - 2 months prior to event
- 100% of the total quoted amount if canceled within 1 month of the event

Extras (Requires Prior Agreement and Arrangement):

Extra	2024	2025
Extensions beyond midnight	R1500 per hour	R1575 per hour
General staff - Monday to Saturday	R80 per person per hour required + R250 transport fee	R85 per person per hour required + R265 transport fee
General staff - Sunday	R110 per person per hour required + R250 transport fee	R115 per person per hour required + R265 transport fee
Carrying / moving / setup / breakdown assist Mon-Fri	R75 ppph + R250 transport fee if required	R80 ppph + R265 transport fee if required
Carrying / moving / setup / breakdown assist Saturday and Sunday	R100 ppph + R250 transport fee if required	R105 ppph + R265 transport fee if required
Barman / barmen (in excess of 9 hours)	R140 per person per hour	R150 per person per hour
Glasses for Beer and/or wine for tables (in excess of those supplied)	R3 per glass (breakage charged at cost price)	R3.20 per glass (breakage charged at cost price)
Wood for firepits (in excess of wood supplied)	R1.50 per piece	R1.55 per piece
Gas heaters (vary in size)	approx. R50 – R75 per hour per heater	approx. R55 – R80 per hour per heater



String lighting (approx. 120m) (for outdoor garden lighting)	R3,000 (including setup)	R3,150 (including setup)
Speaker and microphone (client to test equipment prior)	R500 per event	R525 per event
Guest tractor lift (usually gate to ceremony area)	R1,500 per hour or part thereof required	R1,575 per hour or part thereof required
Soft Serve Machine and soft serve (excl cones, dips, sprinkles etc, incl mixing of ingredients and cleaning)	R1600 per day – max 9L (approx. 105 cone servings)	R1680 per day – max 9L (approx. 105 cone servings)
	R2200 per day – max 18L (approx. 210 cone servings)	R2310 per day – max 18L (approx. 210 cone servings)
Vintage Dairymaid ice cream bike with umbrella and extra cooler box (excludes dry ice etc)	R750 per day	R780 per day
Instant camera + 'booth' set up Incl film, hanging frame for guests to stand behind, table, sign and A4 book for guests to add photos / messages to	R1700 (incl first 50 photos) Plus R400 per 25 photos thereafter	R1785 (incl first 50 photos) Plus R420 per 25 photos thereafter
Pre-drink corkage	R20 per bottle	R20 per bottle
Venue Manager overtime	R400 per hour	R420 per hour
Late Charge (failure to clean up in required time)	R1000 per day	R1000 per day

Guest Departure

All guests not staying on the farm must vacate the premises within 30 minutes of the event's cut-off time unless otherwise agreed.

Large groups are not permitted to gather in the accommodation units after the event.

Venue Clean-Up

The venue, including any additional areas used (such as the pizza bars, pool area, and dam lapa), must be restored to its (their) original condition by the day after the event.

The responsibility for clean-up lies with the hiring party, typically arranged by a wedding planner (if applicable). Late charges may apply for delays.

Set-Up

Set-up is allowed from 9:00 AM on the day prior to the event and on the day of the event. Additional set-up time must be pre-arranged with us.

Breakages

Clients are responsible for all shortages, breakages, losses, and damages caused to 360on62 property. Replacement and repair costs will be determined by 360on62 based on the actual costs incurred. No alterations (painting, nailing, taping) to venue floors or walls are permitted. The client signing the contract will be held responsible for all damages during the event and stay.

A refundable deposit of R4,000 is required to cover breakages, shortages, or damages.

Smoking

Smoking is permitted only in designated open areas in compliance with South African law. No smoking is allowed inside any part of the venue.



Indemnity and Publicity

360on62 is not liable for any loss, harm, damage, theft, injury, or death occurring to hosts, guests, service providers, or any other individuals using the venue or its amenities. 360on62 reserves the right to use any wedding photos or videos for marketing purposes, including on our website and social media.

Music Cut-off Time and Noise Control

All music must cease by midnight unless an overtime agreement is in place. After midnight music may not be audible within a 100m radius, and no extensions will be granted past 2:00 am. 360on62 reserves the right to regulate music volume during the event.

Children

Children are most welcome at 360on62, but they must be supervised at all times. Parents are responsible for their children's safety and wellbeing.

Weather

360on62 does not take responsibility for outdoor events affected by adverse weather. Any additional costs incurred due to weather-related changes are the client's responsibility.

Additional Information

- If dance floors are set up on grass, turf protectors must be used.
- Only biodegradable confetti is allowed (popcorn and feathers are not permitted).
- Spray string and streamers are not allowed.
- Fires may only be made in designated areas or as agreed upon in advance. Fires must not be left unattended or exceed a size deemed safe by 360on62.
- Open-air candles must be placed in jars or hurricane vases as 360on62 is in a high fire-risk area.

Preferred Vendors

We have curated a list of trusted vendors who can assist in making your event at 360on62 truly special. Please contact us for a copy of the list if required. While this list is still growing, we are happy to help you find specific services if needed. Please let us know if there is anything else you require.

Contact Information

Email: info@360on62.co.za | Cell: 079 653 6924 or 060 609 8834 | Instagram: @360on62cottages
Facebook: 360on62 Guest Farm Cottages | Website: www.360on62.co.za

